

# Capability Statement



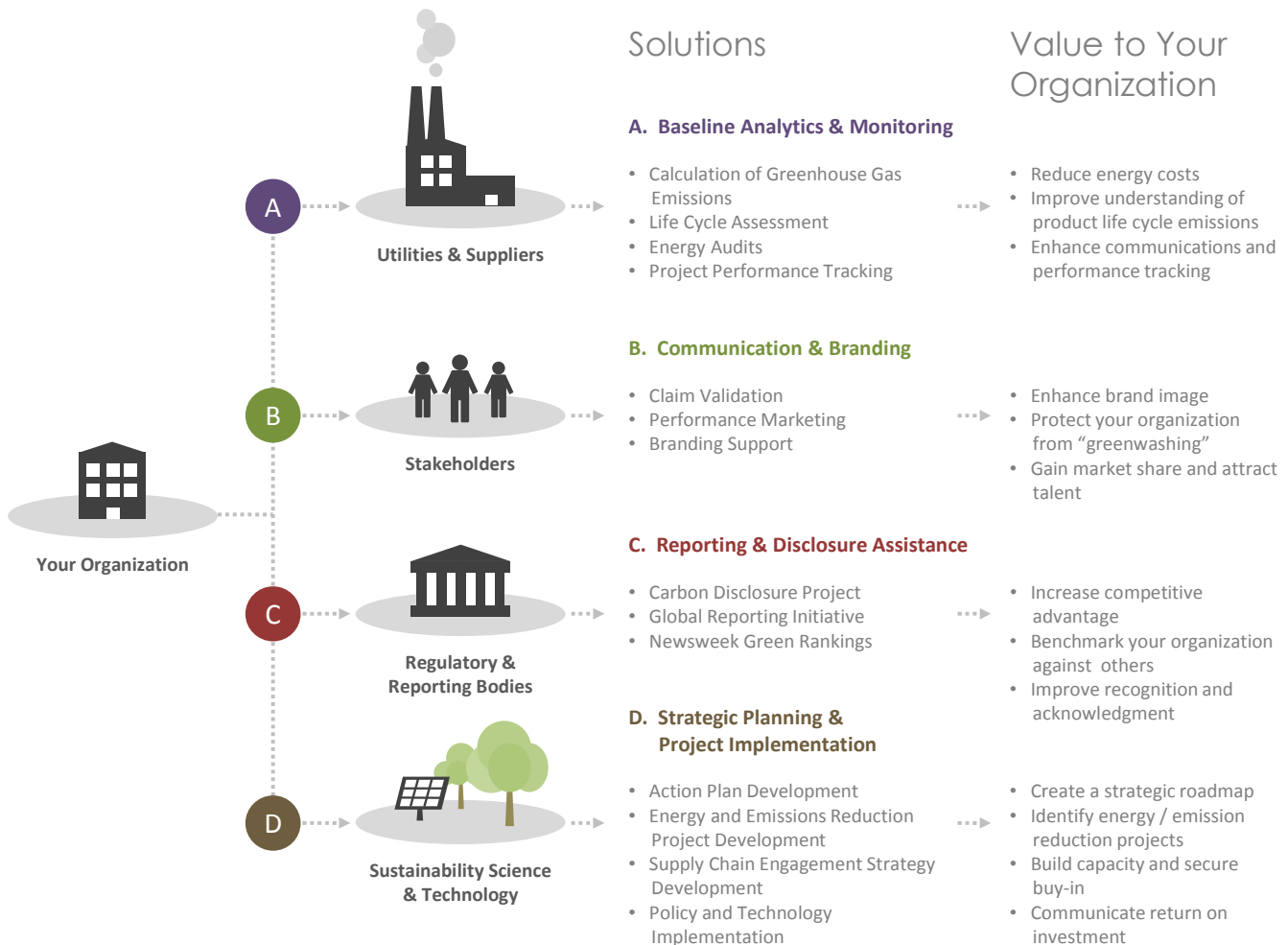
[www.carbonsolutionsamerica.com](http://www.carbonsolutionsamerica.com)

## Profile

Carbon Solutions America (CSA) is a sustainability advisory firm. We help our clients capitalize on sustainability in a way that adds value to their organizations. CSA provides a turn-key service offering that includes baseline analytics, reporting and disclosure assistance, communication and branding, and technology implementation. We have built sustainability programs for many organizations, helped companies report to the Carbon Disclosure Project, the Global Reporting Initiative, and meet the International Council for Local Environmental Initiatives five milestone process. At CSA, we pride ourselves in assisting clients to identify, finance, and integrate technology solutions to optimize energy efficiency and carbon performance.

## Sustainability Solutions that Add Value

How can your organization apply sustainability to add value? Answering this question does not have to be as challenging as defining the concept of sustainability itself. Organizations can add value by optimizing operational efficiency and communicating sustainability performance to important stakeholders including employees, customers, investors, and reporting bodies such as the Carbon Disclosure Project. The real challenge is collecting, analyzing, and acting on underutilized information coming from within your organization, energy utility companies, suppliers, technology providers, and the sustainability industry. Carbon Solutions America offers a full range of solutions to help your organization better utilize this information through: A) Baseline Analytics and Monitoring, B) Communication and Branding, C) Reporting and Disclosure Assistance, and D) Strategic Planning and Project Implementation.



## Team

**Nick Loeb**  
Managing Partner

**Alex Hernandez**  
Managing Partner

**Jonathan Brewer** Technical Director

B.A. Physics, Boston University

Mr. Brewer’s specialties are in three major areas: carbon footprinting, carbon credit management, and sustainability consulting. He has in-depth knowledge of industry standard carbon footprinting methodologies as well as data management and development techniques. Mr. Brewer is also fully versed in numerous reporting protocols including the Carbon Disclosure Project, GRI, Newsweek, and others.

**Dmitriy Shvets** Sustainability Specialist

M.P.A. Environmental Science and Policy, Columbia University

B.Sc. Natural Resources Management, SUNY College of Env. Science & Forestry

Dmitriy applies his science and policy background to develop programmatic solutions that drive energy/emissions performance for his clients. He has experience in project management, strategic planning, carbon footprinting methodologies, energy savings analysis, technical research, and reporting protocols. Dmitriy prides himself on having the ability to deconstruct technical findings and communicate them in a lucid manner.

## Past Performance

	Baseline Analytics & Monitoring	Environmental Communication & Branding	Reporting & Disclosure Assistance	Strategic Planning & Project Implementation
<b>Private Organizations</b>				
Syniverse Technologies	●	●	●	●
Las Vegas Sands Corporation	●	●	●	
Juniper Networks			●	
Sandisk			●	
Eli Lilly			●	
Riverbend Vineyards	●	●		
Onion Crunch	●	●		
Continental Realty	●			
Beaches MRI	●			
<b>Government</b>				
City of New Orleans, LA and Tulane University	●			●
City of Cedar Hill, TX	●			●
Hillsborough County, FL	●			●
Town of Davie, FL	●			●
City of Fort Lauderdale, FL	●	●		●
Town of Palm Beach, FL	●			●
Osceola County, FL	●			●
City of Riviera Beach, FL	●			●
City of Grand Prairie, TX	●			

## Affiliations



## Contact Information

**Alex Hernandez** Managing Partner

alex@emailcsa.com

561.953.8960

1850 Lake Drive  
Delray Beach, Florida 33444

[www.carbonsolutionsamerica.com](http://www.carbonsolutionsamerica.com)